



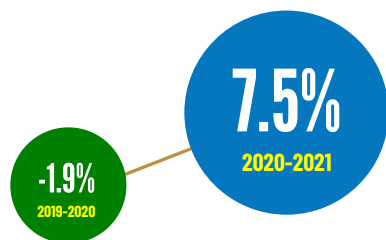
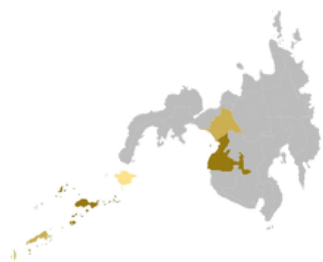
# 2021 GROSS REGIONAL DOMESTIC PRODUCT (GRDP)



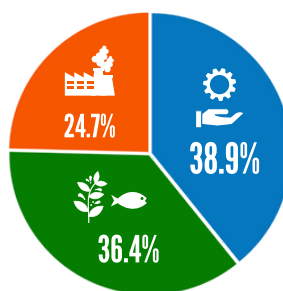
Date of Release: April 28, 2022

Reference No: IG-BARMM-22-011

**GRDP** is a tool to monitor the economic performance of a region. It covers the value of goods and services produced in the region during the reference period.

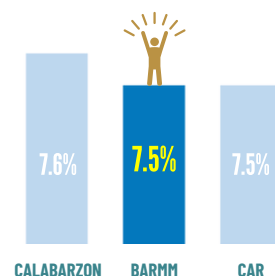


The Economy of **BARMM** increased from **-1.9%** in 2019-2020 to **7.5%** in 2020-2021, at constant 2018 prices.



**BARMM** is predominantly **Services-based** with **38.9%** share, followed by **Agriculture, Forestry and Fishing** at **36.4%** share and **Industry** with **24.7%** share.

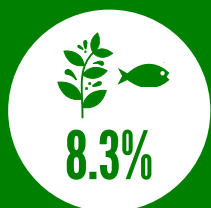
**BARMM** has the **second** fastest growth among all regions in Philippines, between **CALABARZON** and **CAR** with **7.6%** and **7.5%**, respectively



## BARMM GRDP GROWTH RATES BY MAJOR INDUSTRY (AT CONSTANT 2018 PRICES)

### AFF

**Agriculture, Forestry and Fishing (AFF)** accelerated from 2.7% (2019-2020) to 8.3% (2020-2021)



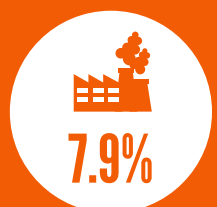
### Services

**Service Sector** accelerated from -4.5% (2019-2020) to 6.6% (2020-2021)



### Industry

**Industry Sector** accelerated from -3.9% (2019-2020) to 7.9% (2020-2021)



**Mining and Quarrying 20.2%**

from -54.4 (2019-2020) to 20.2% (2020-2021)

**Manufacturing 8.1%**

from 0.3% (2019-2020) to 8.1% (2020-2021)

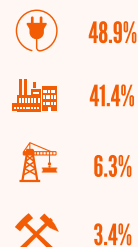
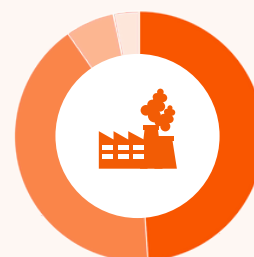
**Construction 12.2%**

from -37.3% (2019-2020) to 12.2% (2020-2021)

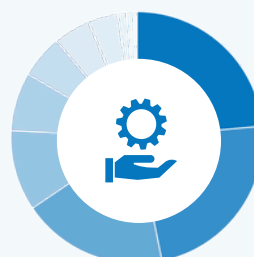
**Electricity, Gas and Water Supply 6.4%**

from 6.7% (2019-2020) to 6.4% (2020-2021)

### PERCENT DISTRIBUTION OF INDUSTRY SUBSECTORS, 2021



### PERCENT DISTRIBUTION OF SERVICES SUBSECTORS, 2021



	<b>Wholesale and retail trade; repair of motorcycles and vehicles</b>	<b>2.5%</b>
	from -5.3% (2019-2020) to 2.5% (2020-2021)	
	<b>Transportation and storage</b>	<b>7.2%</b>
	from -20.7% (2019-2020) to 7.2% (2020-2021)	
	<b>Accommodation and food service activities</b>	<b>17.9%</b>
	from -48.1% (2019-2020) to 17.9% (2020-2021)	
	<b>Information and Communication</b>	<b>7.5%</b>
	from 8.4% (2019-2020) to 7.5% (2020-2021)	
	<b>Financial and Insurance activities</b>	<b>10.6%</b>
	from 14.9% (2019-2020) to 10.6% (2020-2021)	
	<b>Real estate and ownership of dwellings</b>	<b>0.4%</b>
	from -7.8% (2019-2020) to 0.4% (2020-2021)	
	<b>Professional and business services</b>	<b>8.0%</b>
	from -4.7% (2019-2020) to 8.0% (2020-2021)	
	<b>Public administration and defense, compulsory social activities</b>	<b>6.9%</b>
	from 3.5% (2019-2020) to 6.9% (2020-2021)	
	<b>Education</b>	<b>8.0%</b>
	from -4.7% (2019-2020) to 8.0% (2020-2021)	
	<b>Human health and social work activities</b>	<b>22.2%</b>
	from 10.4% (2019-2020) to 22.2% (2020-2021)	
	<b>Other Services</b>	<b>4.6%</b>
	from -54.2% (2019-2020) to 4.6% (2020-2021)	

### PER CAPITA GRDP/GRDE, 2021

In 2021, **BARMM's Per Capita GRDP/GRDE** was estimated at **54,535 pesos**, increased by **5.4 percent** from the previous year's record of **51,758 pesos**.

