



بِسْمِ اللَّهِ الرَّحْمَنِ الرَّحِيمِ

REPUBLIC OF THE PHILIPPINES

PHILIPPINE STATISTICS AUTHORITY

BANGSAMORO AUTONOMOUS REGION IN MUSLIM MINDANAO

SPECIAL RELEASE

BARMM Consumer Price Index in December 2021

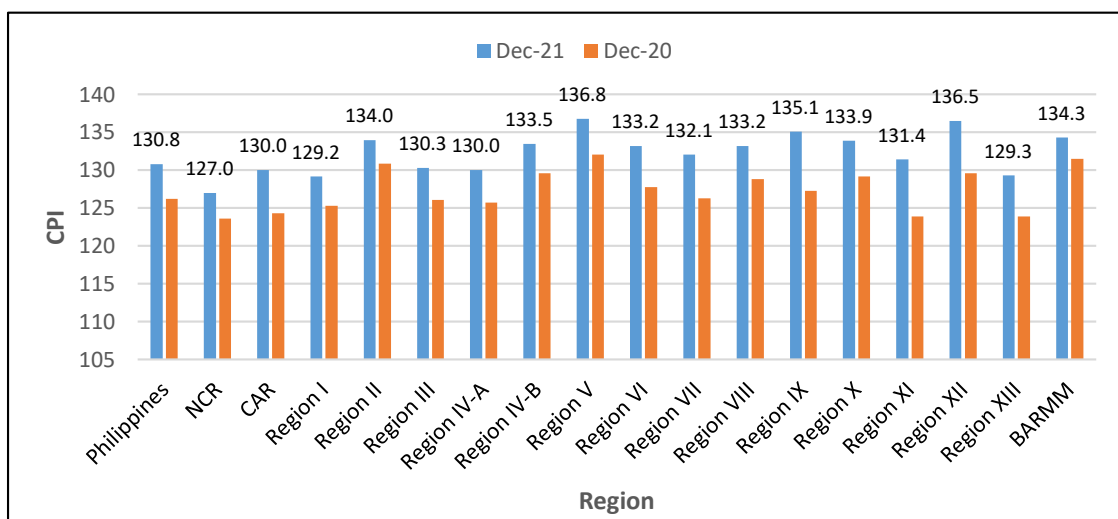
Date of Release: **2 February 2022**

Reference No. **2022-002**

Consumer Price Index

The Consumer Price Index (CPI) is an indicator of the changes in the average retail prices of fixed basket of goods and services commonly purchased by households relative to a base year. BARMM recorded a CPI of 134.3 in December 2021. The region's CPI is the third highest in the entire country during this period.

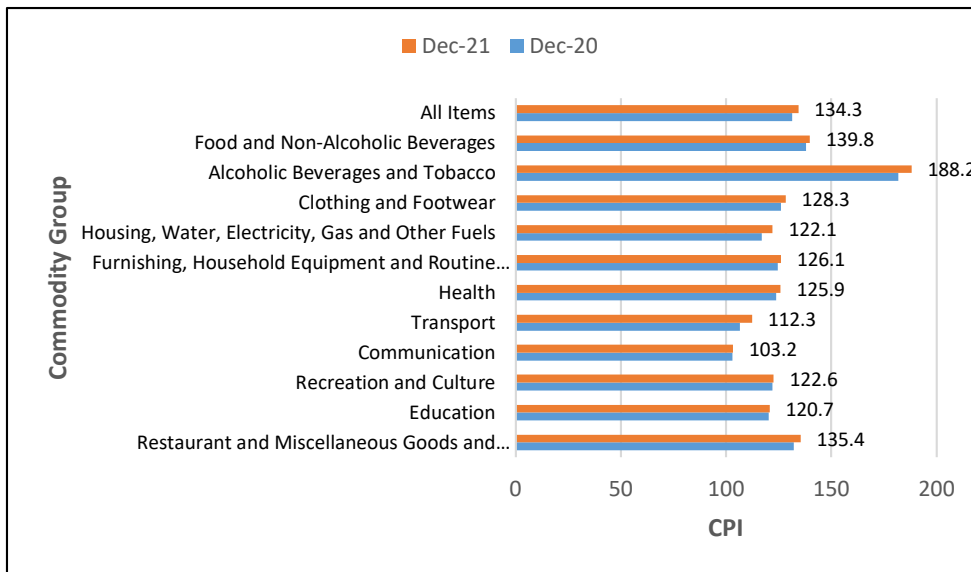
Figure 1. Monthly Consumer Price Index for All Income Households in the Philippines, by Region: December 2021 and December 2020



Source of Basic Data: Philippine Statistics Authority
Survey of Retail Prices of Commodities for the Generation of CPI

Figure 2 shows that commodity groups of ⁽¹⁾*Alcoholic Beverages and Tobacco*, ⁽²⁾*Food and Non-Alcoholic Beverages*, and ⁽³⁾*Restaurant and Miscellaneous Goods and Services* have the highest corresponding CPIs of 188.2, 139.8 and 135.4 in December 2021. On the other hand, ⁽¹⁾*Communication*, ⁽²⁾*Transport* and ⁽³⁾*Education* have the lowest CPIs of 103.2, 112.3 and 120.7, respectively.

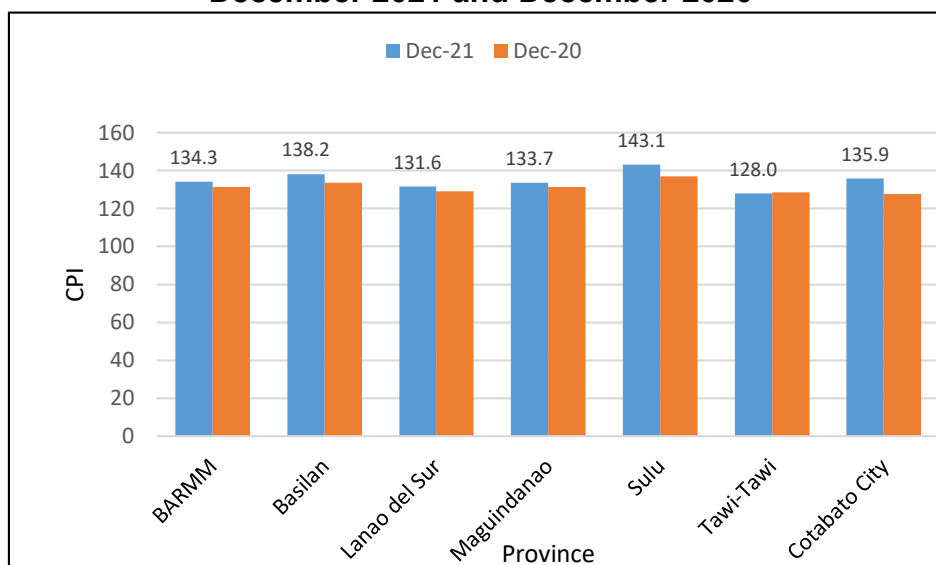
Figure 2. Monthly Consumer Price Index for All Income Households in BARMM, by Commodity Group: December 2020 and December 2021



Source of Basic Data: Philippine Statistics Authority
Survey of Retail Prices of Commodities for the Generation of CPI

The Province of Sulu recorded the highest CPI in the region in December 2021 at 143.1, as shown in Figure 3. This was followed by Basilan and Cotabato City with CPIs of 138.2 and 135.9, respectively. Tawi-Tawi has the lowest CPIs among the provinces with 128.0.

Figure 3. Monthly Consumer Price Index for All Income Households in BARMM, by Province: December 2021 and December 2020

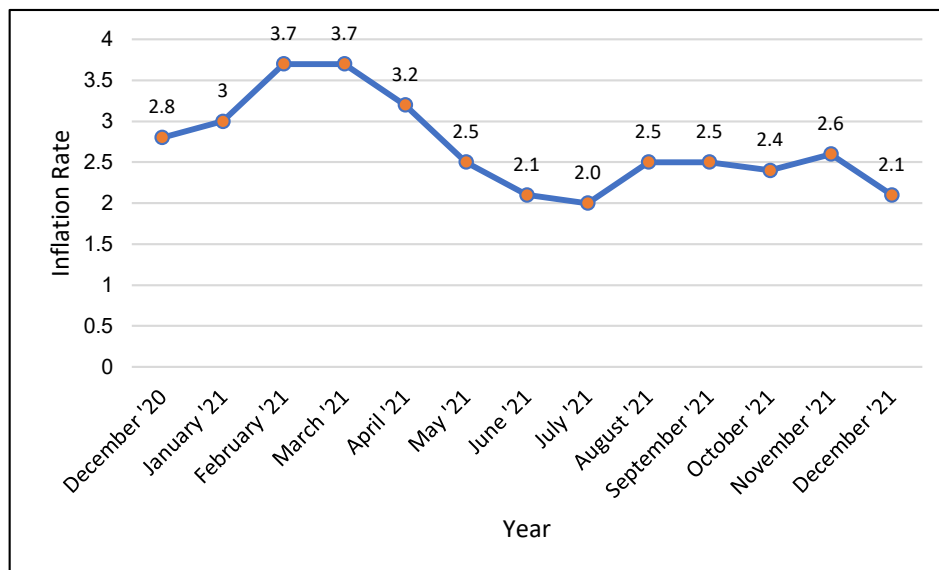


Source of Basic Data: Philippine Statistics Authority
Survey of Retail Prices of Commodities for the Generation of CPI

Inflation Rate

Figure 4 shows that the inflation rate of BARMM decelerated to 2.1 percent in December 2021 from 2.6 percent inflation rate in November 2021. This implies that the average retail prices of goods and services in the market basket in BARMM increased by 2.1 percent in December 2021 compared to the prices in December 2020.

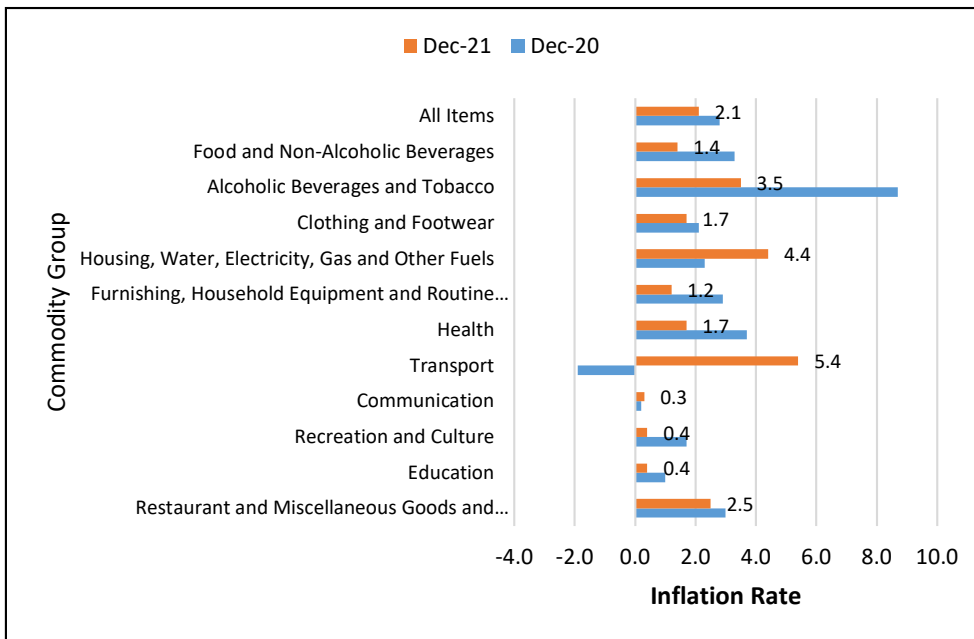
Figure 4. Year-on-Year Headline Inflation Rate in BARMM, All Items: December 2020 – December 2021



Source of Basic Data: Philippine Statistics Authority
Survey of Retail Prices of Commodities for the Generation of CPI

Commodity groups of ⁽¹⁾*Transport*, ⁽²⁾*Housing, Water, Electricity, Gas and Other Fuels* and ⁽³⁾*Alcoholic Beverages and Tobacco* have the highest inflation rates in December 2021 recorded at 5.4 percent, 4.4 percent and 3.5 percent, respectively. On the other hand, commodity groups of ⁽¹⁾*Communication* has the lowest corresponding inflation rate of 0.3 percent. (see Figure 5).

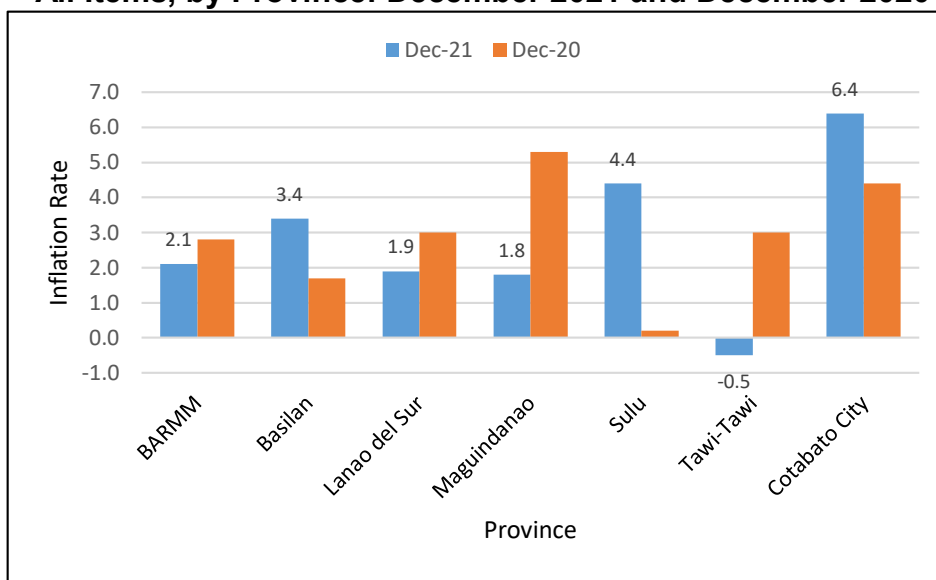
Figure 5. Year-on-Year Headline Inflation Rate in BARMM, All Items, by Commodity Group: December 2021 and December 2020



Source of Basic Data: Philippine Statistics Authority
Survey of Retail Prices of Commodities for the Generation of CPI

It is shown in Figure 6 that Cotabato City has the highest inflation rate which is 6.4 percent in December 2021. This is followed by Sulu with 4.4 percent. On the other hand, Tawi-Tawi has a deflation rate of 0.5 percent in the said month.

Figure 6. Year-on-Year Headline Inflation Rate in BARMM, All Items, by Province: December 2021 and December 2020

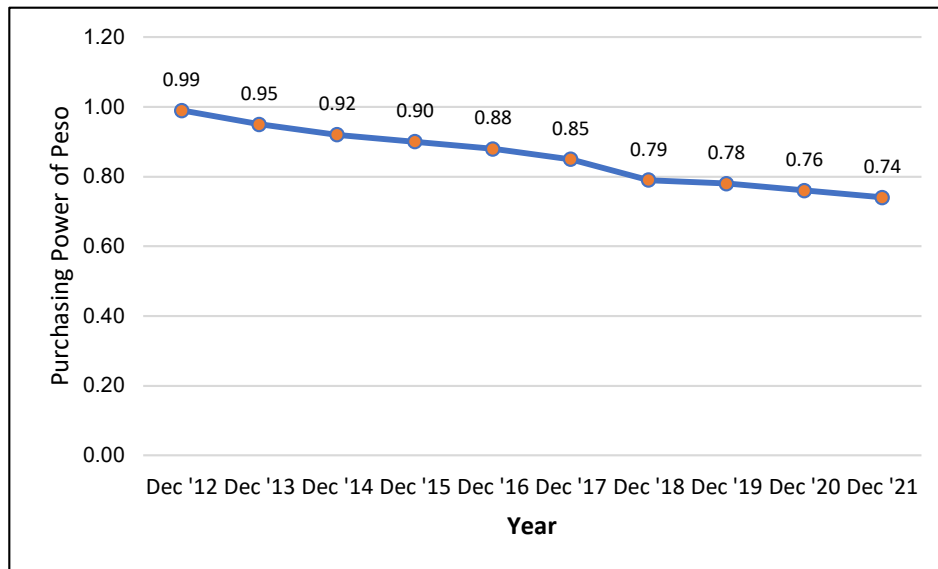


Source of Basic Data: Philippine Statistics Authority
Survey of Retail Prices of Commodities for the Generation of CPI

Purchasing Power of Peso

Purchasing Power of Peso (PPP) is inversely related to inflation rate. Thus, as the inflation rate increases, PPP declines, as shown in Figure 7. In BARMM, PPP is at 0.74 as of December 2021. This is 2.6 percent lower than the PPP in December 2020.

**Figure 7. Purchasing Power of Peso in BARMM:
as of December 2021**



Source of Basic Data: Philippine Statistics Authority
Survey of Retail Prices of Commodities for the Generation of CPI

Technical Notes

Consumer Price Index (CPI)

The CPI is an indicator of the changes in the average retail prices of a fixed basket of goods and services commonly purchased by households relative to a base year.

Uses of CPI

The CPI is most widely used in the calculation of the inflation rate and purchasing power of peso. It is a major statistical series used for economic analysis and as a monitoring indicator of government economic policy.

Computation of CPI

The computation of the CPI involves consideration of the following important points:

a. Base Period

The reference date or base period is the benchmark or reference date or period at which the index is taken as equal to 100.

b. Market Basket

A sample of the thousands of varieties of goods purchased for consumption and services availed by the households in the country selected to represent the composite price behavior of all goods and services purchased by consumers.

c. Weighting System

The weighting pattern uses the expenditures on various consumer items purchased by households as a proportion to total expenditure.

d. Formula

The formula used in computing the CPI is the weighted arithmetic mean of price relatives, the Laspeyres formula with a fixed base year period (2006) weights.

e. Geographic Coverage

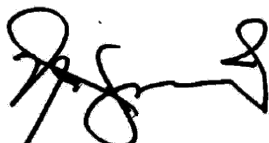
CPI values are computed at the national, regional, and provincial levels, and for selected cities.

Inflation Rate is the rate of change of the CPI expressed in percent. Inflation is interpreted in terms of declining purchasing power of peso.

Headline Inflation refers to the rate of change in the CPI, a measure of the average standard "basket" of goods and services consumed by a typical family.

Purchasing Power of Peso shows how much the peso in the base period is worth in the current period. It is computed as the reciprocal of the CPI for the period under review multiplied by 100.

Note: The dataset used in the special release is exclusive for ARMM plus Cotabato City.



ENGR. NASER S. USMAN
OIC-Regional Director

NSU/MHS/NCC